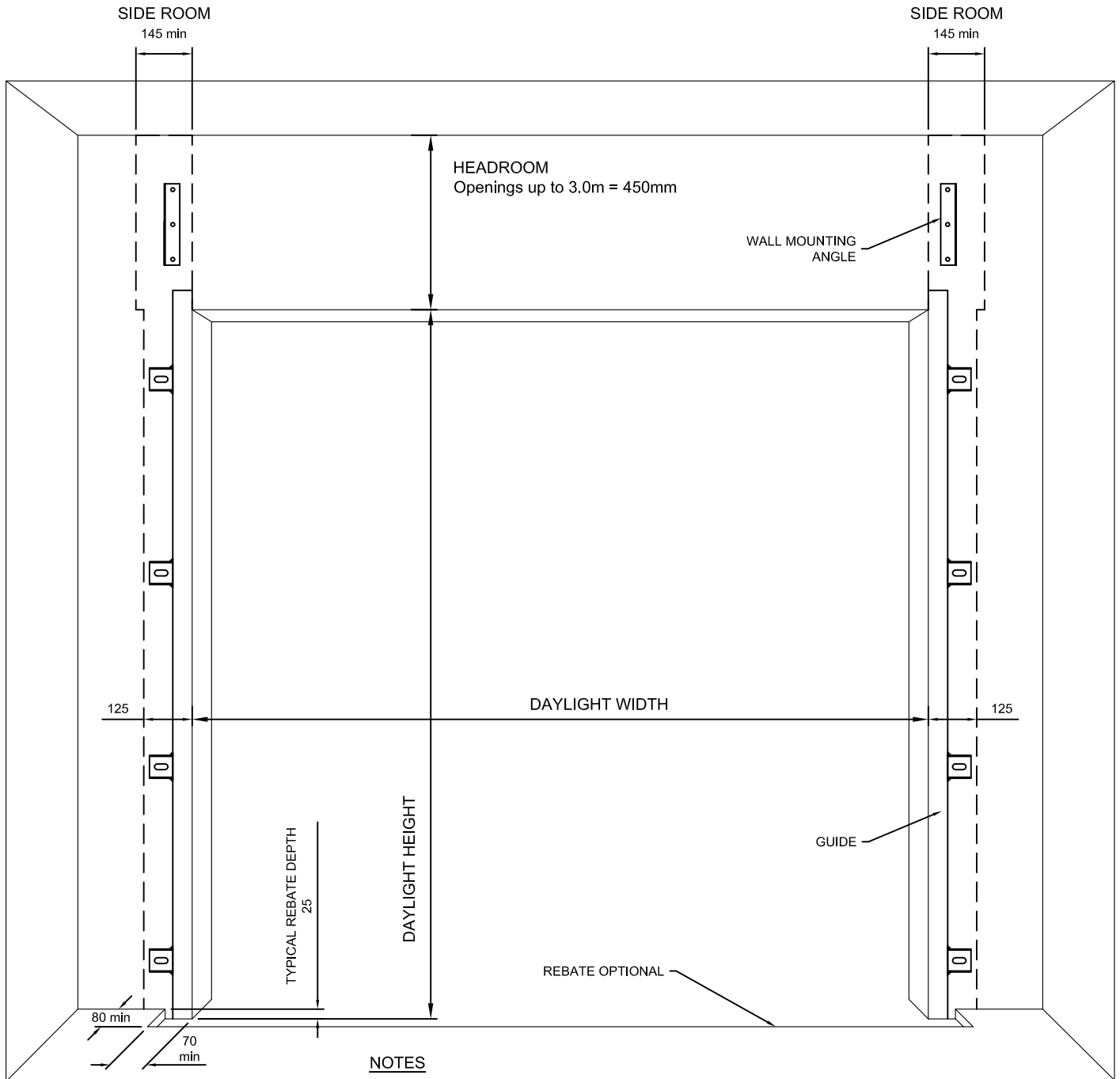


STEEL ROLLER SHUTTER - STANDARD GUIDES SPRING BALANCED

WALL CLEARANCE REQUIREMENTS

* FOR WALL STRUCTURE & FIXINGS LAYOUT REFER TO SHEET S6-St & S6-Ss



NOTES

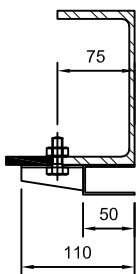
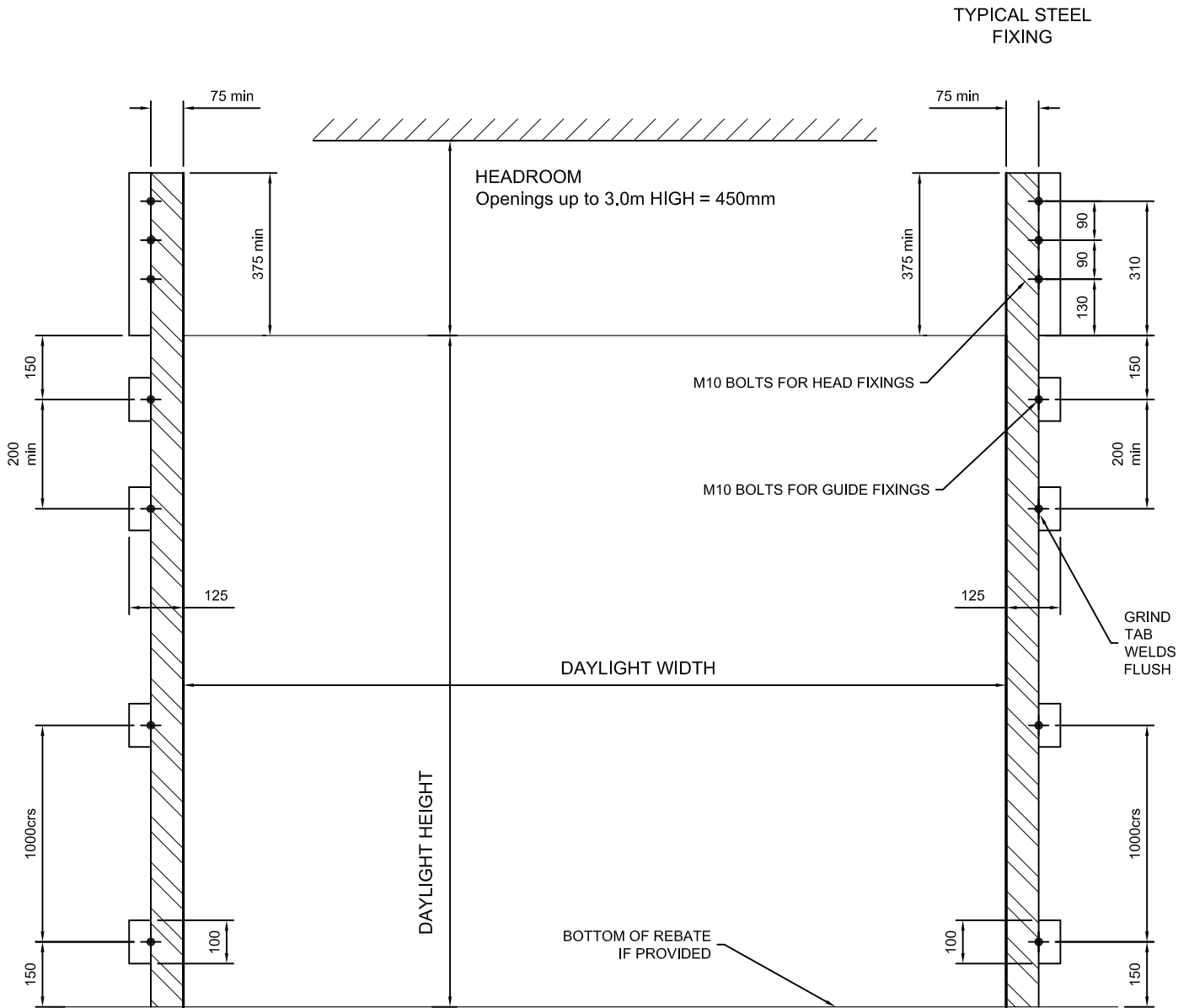
- STANDARD LAYOUT SHOWN. REFER TO SALES FOR SPECIAL CLEARANCE OPTIONS
- REFER TO THE METALBILT DOORS STEEL ROLLER SHUTTER SELECTION CHART FOR MAXIMUM DOOR SIZES

STEEL ROLLER SHUTTER - STANDARD GUIDES SPRING BALANCED

S6-Ss

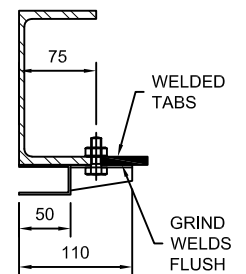
STEEL DETAILS AND FIXING LAYOUT

* FOR HEADROOM & SIDEROOM CLEARANCES REFER TO SHEET S5-S



NOTES

- FIXINGS CENTRES ARE THE SAME FOR BOTH SIDES OF THE DOOR
- STANDARD LAYOUT SHOWN. REFER TO SALES FOR SPECIAL CLEARANCE OPTIONS
- ALL TAB WELDS MUST BE GROUND FLUSH ON FACE OF STEEL STRUCTURE
- STRUCTURES SHOWN ARE INDICATIVE ONLY STRUCTURAL ENGINEERING TO BE CLIENTS CARE
- SEE METALBILT FOR ROLL FORMED JAMB RECOMMENDATIONS
- GUIDE FIXINGS REQUIRED UP TO LINTEL ONLY



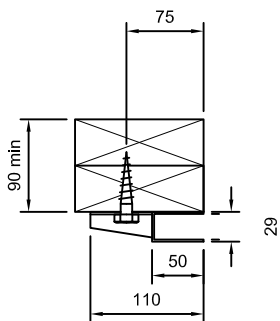
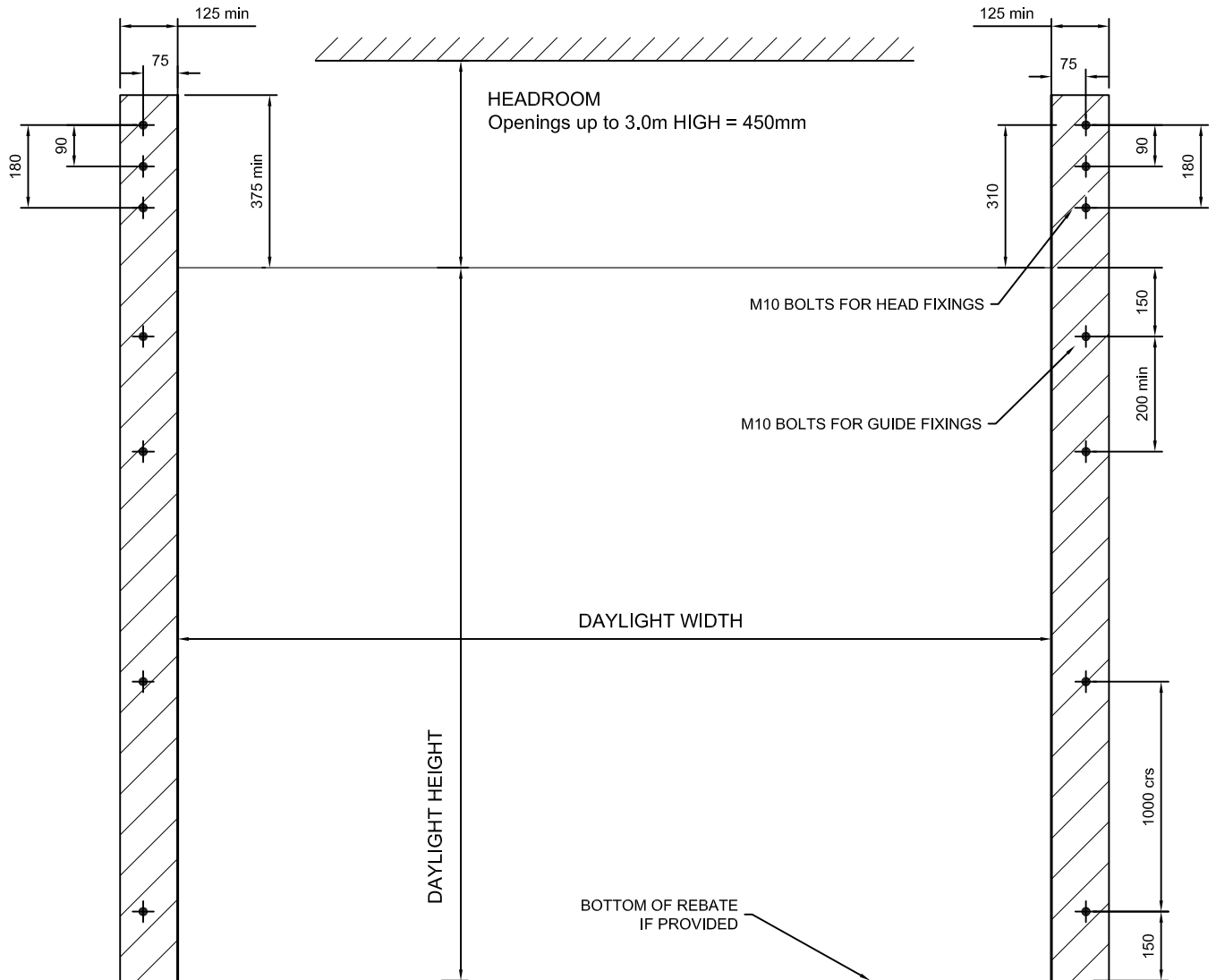
TYPICAL STEEL FIXING (BY OTHERS)

STEEL ROLLER SHUTTER - STANDARD GUIDES SPRING BALANCED

TIMBER DETAILS AND FIXING LAYOUT

* FOR HEADROOM & SIDEROOM CLEARANCES REFER TO SHEET S5-S

TYPICAL TIMBER
FIXING



TYPICAL TIMBER
FIXING (BY OTHERS)

NOTES

- FIXINGS CENTRES ARE THE SAME FOR BOTH SIDES OF THE DOOR
- STANDARD LAYOUT SHOWN. REFER TO SALES FOR SPECIAL CLEARANCE OPTIONS
- STRUCTURES SHOWN ARE INDICATIVE ONLY. STRUCTURAL ENGINEERING TO BE CLIENTS CARE
- GUIDE FIXINGS REQUIRED UP TO LINTEL ONLY

